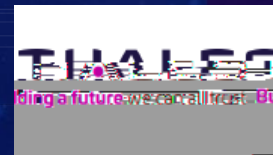


- 
- 
- 
- 
- 
- 
- 
-



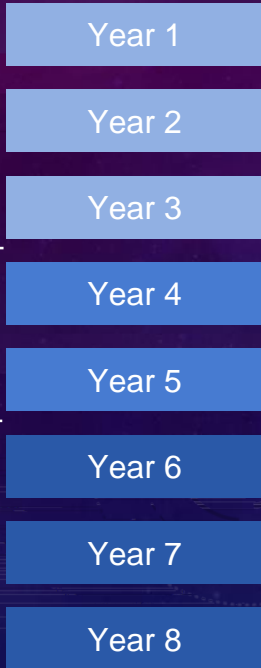
- 
- 
- 
- 
-



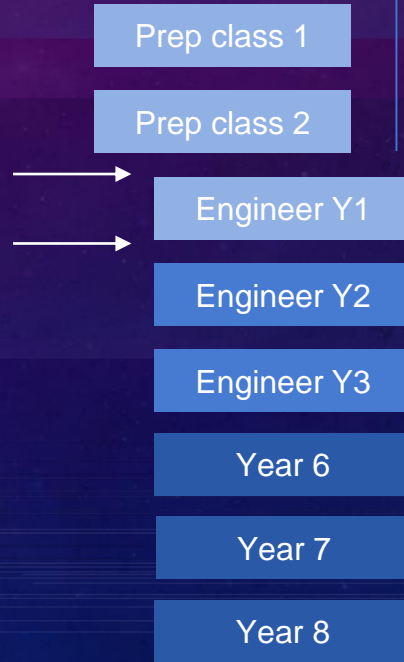




**University curriculum**



**curriculum**

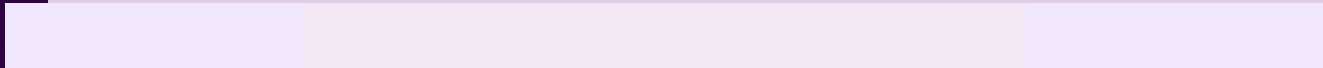
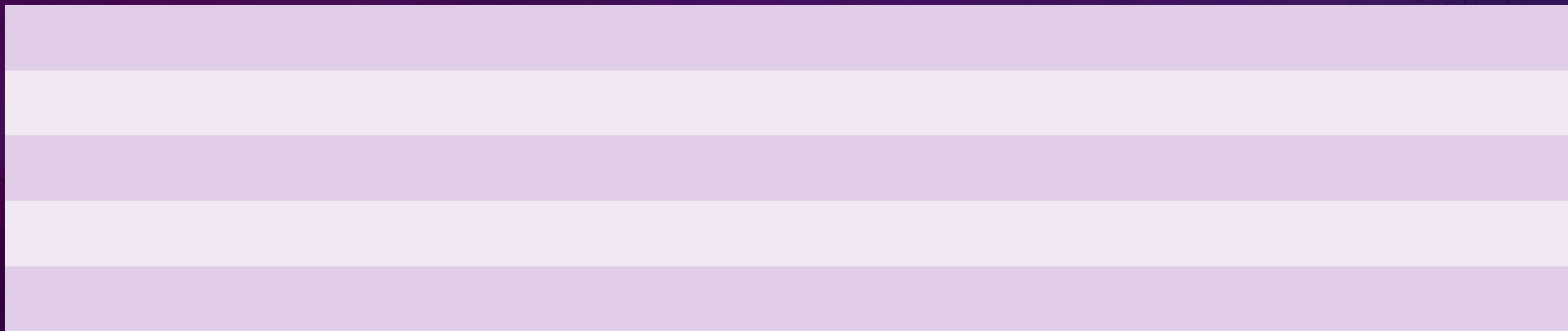


Preparatory classes  
*(Students in Top 5%)*

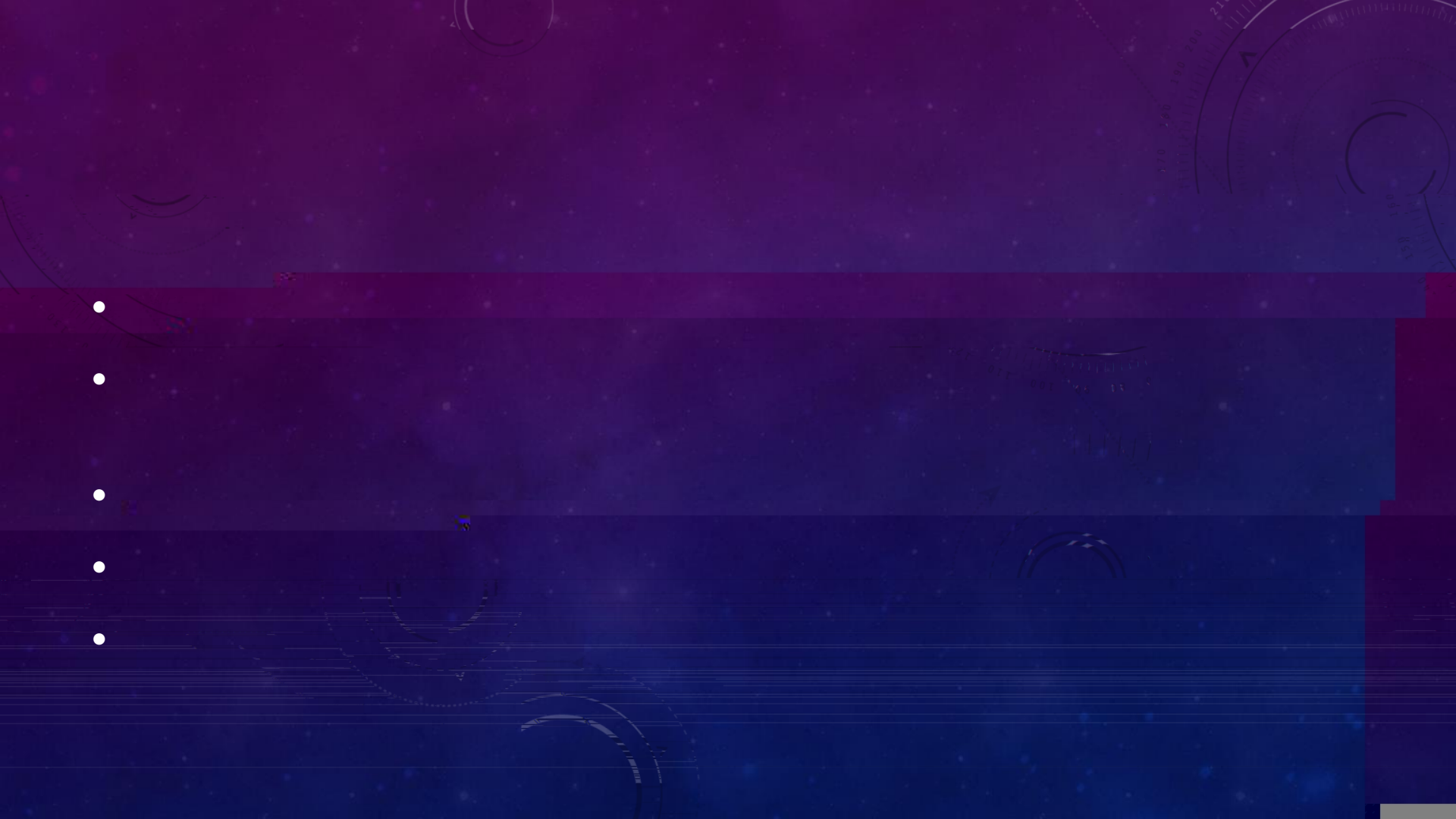


**Engineering graduate school**  
*(Students in Top 1%)*









•

•

•

•

•

- 
- 
- 
- 
- 
- 





- 

- 

---

- 

- 

- 

- 

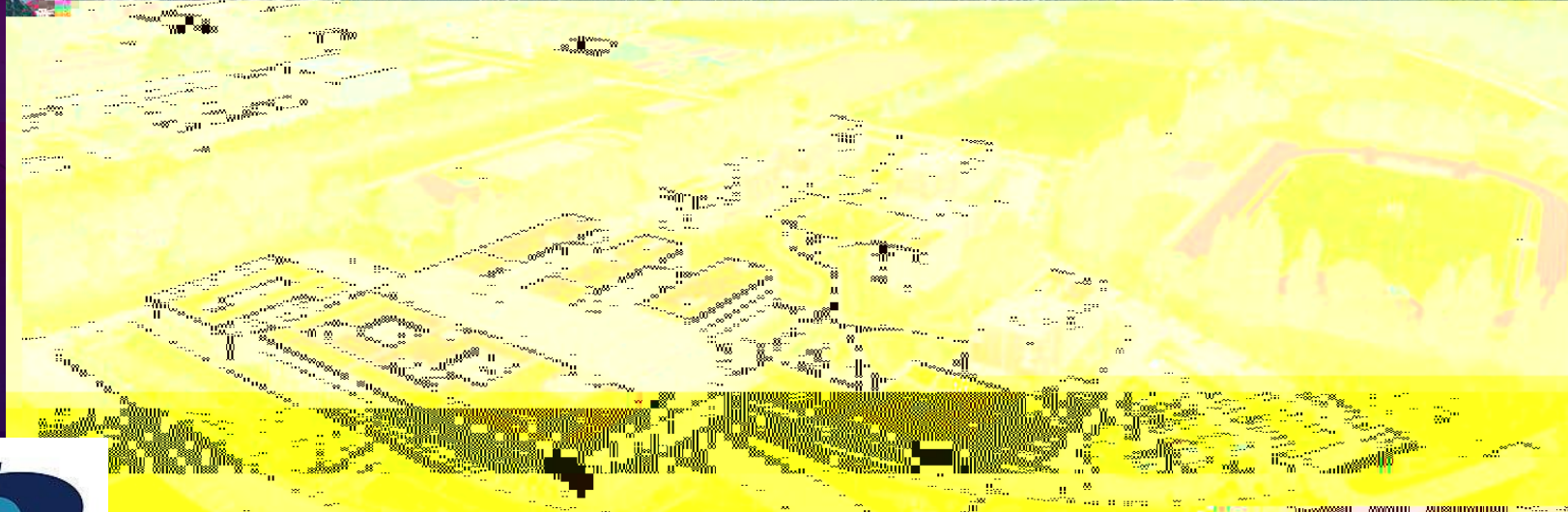
- 

- 









ENSTA



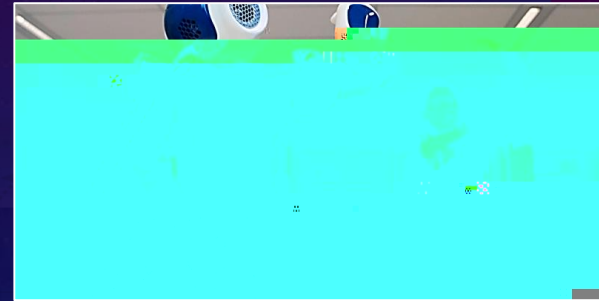
IP PARIS



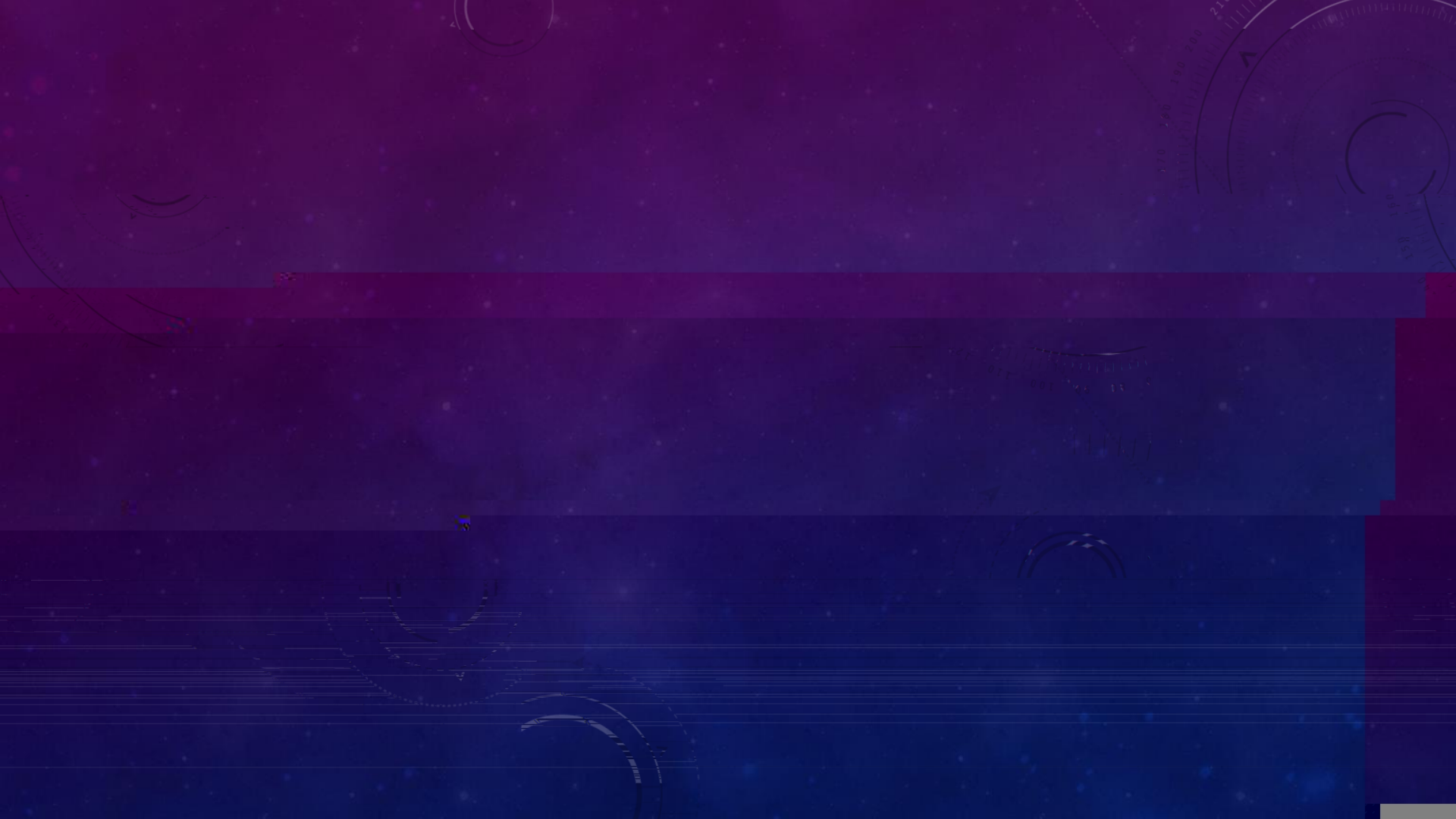
- 

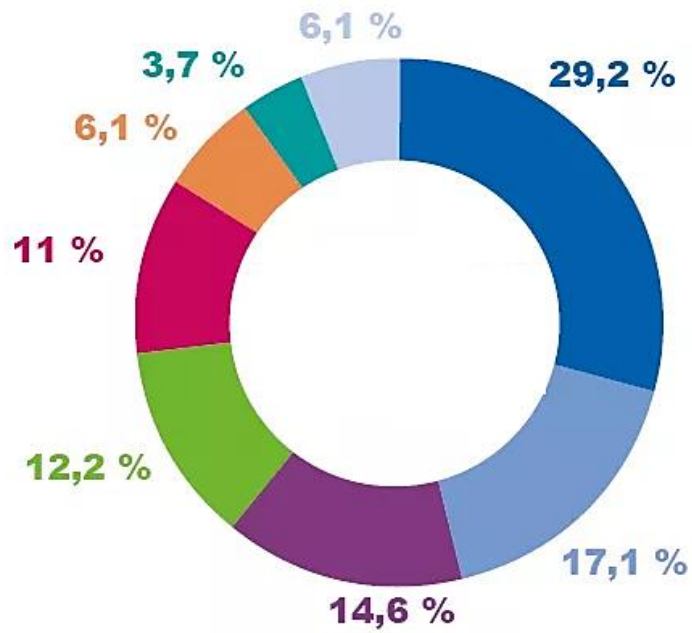
- 

-









- Information technologies, systems engineering, data science & artificial intelligence
- Energy & environment
- Transports
- Consulting
- R&D
- Finance
- Construction
- Other





TELECOM  
Paris



INSTITUT  
POLYTECHNIQUE  
DE PARIS

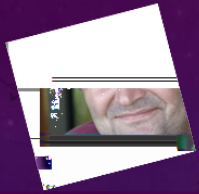


# THE WORLD UNIVERSITY RANKINGS 2020 TOP 190

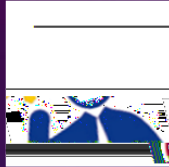


# 3 Major Profiles of Engineers

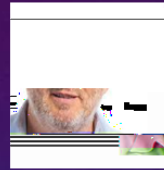
Thanks to Excellence in Scientific Teaching:



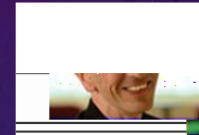
Bruno MAISONNIER (83)  
Creator of NAO and PEPPER



Vincent DUREAU (84)  
TV technology for Google

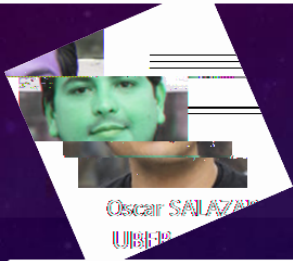


Luc JULIA (95)  
SIRI technology for Apple



Thanks to an Innovative, Interactive and Project-based Pedagogy:

Thanks to an Innovative, Interactive and Project-based Pedagogy:



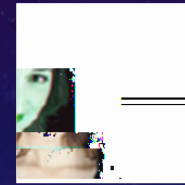
Oscar SALAZAR (06)  
UBER



Céline LAZORTHES (08)  
Leetchi Founder



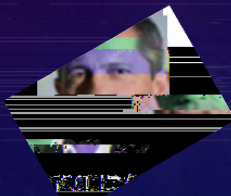
Oscar SALAZAR (06)  
UBER co-founder



Jean-Luc VAILLANT (90)  
LinkedIn co-founder

Thanks to Economics & Digital Social Sciences Teaching:

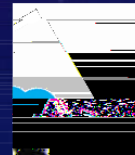
Thanks to Economics & Digital Social Sciences Teaching:



Elodie PERTHUISOT-ZIEGLER (04)



Jean-Christophe VALANNE (89)



Yves TYRADE (91)

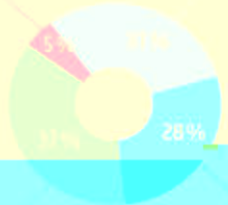


97% of graduates are employed **within 3 months** of graduation.

#### COMPANY SIZE

micro-businesses  
(less than 10 employees)

Small and medium-sized  
enterprises  
(10 - 49 employees)



Large companies  
(more than 500 employees)

Mid-sized companies  
(250 - 499 employees)

#### LOCATION

Other regions

Paris region



Other regions

Paris region

#### STRATEGY CONSULTING AND OPERATIONS

BANKING AND INSURANCE

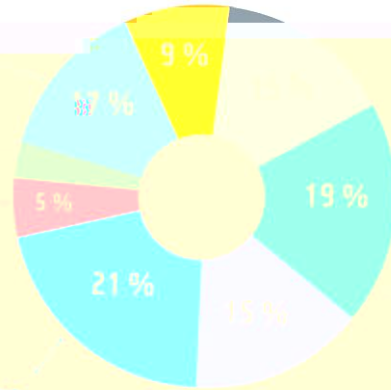
ENERGY

GOVERNMENT,  
LOCAL AUTHORITIES  
AND HOSPITALS  
(excluding teaching & research)

DIGITAL TECHNOLOGIES  
AND INNOVATION CONSULTING

MANUFACTURING INDUSTRIES  
(aerospaces, transport, IT)

DIGITAL SERVICES AND SOFTWARE



Software development: 10%  
Data processing and hosting: 4%  
Telecommunications: 4%  
Internet and web portals: 3%  
E-commerce, e-business and distribution: 2%

47,950 €

Average annual  
gross salary with bonuses





Goldman  
Sachs



Executive Director  
Goldman Sachs  
New York City, USA

### AI & Data Science

Stochastic processes and  
 Representation of  
 Artificial Intelligence

### Mathematics & Computer Sciences

Stochastic processes and  
 Representation of  
 Artificial Intelligence

### Computer Systems and Embedded

Stochastic processes and  
 Representation of  
 Artificial Intelligence

### Interactive and Embedded

Stochastic processes and  
 Representation of  
 Artificial Intelligence

### Networks, Communications & Cybersecurity

Evolution  
 (Data, MODS)

et  
 ni  
 eg

# Year 3: Career Preparation Options

Télécom Paris *Télécom Paris*  
Technological Innovation (30 ECTS)

1 study field - 12 ECTS  
+ a "PRIM" Research Project - 18 ECTS

+ complementary elective courses (sciences, languages, humanities, etc.)

Areas:

- Artificial Intelligence, Image and Data Sciences
- Networks, IOT and Cybersecurity
- Digital systems

Partnership Master 2 - 30 ECTS

OR

Areas:

- Fundamentals of Mathematics & Computer Science
- Networks, IOT and Cybersecurity
- Digital systems
- Innovation

OR

6-month paid internship in France  
30 ECTS (1 semester)

6-month paid internship in France  
30 ECTS (1 semester)